



Gewindeformer für Whitworth-Rohrgewinde



P	•
M	•
K	•
N	○
S	•
H	

Schneidstoff **HSS-E-PM**

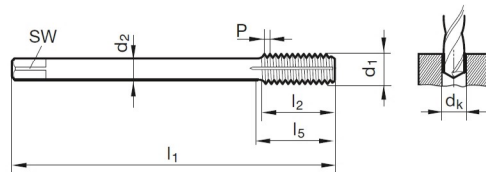
Ø-Toleranz

Oberfläche **C**

Typ N

Form C

Innenkühlung



DIN 2184-1 DIN 2189

Artikel-Nr.

4493

Rabattgruppe

208

d1	P	d2	SW	dk	l1	l2	l5	Code-Nr.
	inch	mm	mm	mm	mm	mm	mm	
G1/8	28,000	7,000	5,500	9,30	90,000	18,000	35,000	9,728
G1/4	19,000	11,000	9,000	12,50	100,000	20,000	40,000	13,157
G3/8	19,000	12,000	9,000	16,00	100,000	22,000	44,000	16,662
G1/2	14,000	16,000	12,000	20,00	125,000	25,000	44,000	20,955