

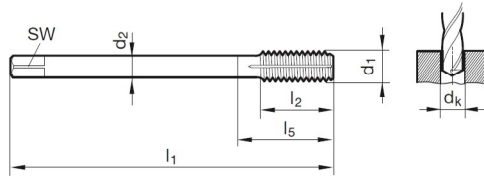


Gewindeformer für Metrische ISO-Feingewinde



P	•
M	•
K	•
N	○
S	•
H	

Schneidstoff	HSS-E-PM		
	6HX	6GX	6HX
Ø-Toleranz	6HX	6GX	6HX
Oberfläche	C	C	C
Typ	N	N	N
Form	C	C	E
Innenkühlung	<input checked="" type="checkbox"/>	<input checked="" type="checkbox"/>	<input checked="" type="checkbox"/>



DIN 2174 - DIN 374

Artikel-Nr.

4489

4490

4495

Rabattgruppe

208

208

208

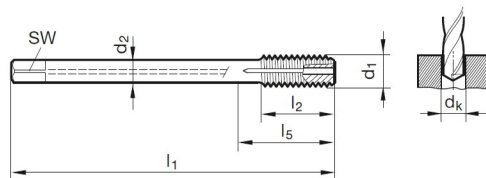
d1	d2	SW	dk	l1	l2	l5	Code-Nr.
mm	mm	mm	mm	mm	mm	mm	
M8 x 1	6,000	4,900	7,55	90,000	16,000	35,000	8,005
M10 x 1	7,000	5,500	9,55	90,000	16,000	35,000	10,005
M10 x 1,25	7,000	5,500	9,40	100,000	20,000	39,000	10,006
M12 x 1,25	9,000	7,000	11,40	100,000	20,000	40,000	12,006
M12 x 1,5	9,000	7,000	11,30	100,000	20,000	40,000	12,007
M14 x 1,25	11,000	9,000	13,40	100,000	20,000	40,000	14,006
M14 x 1,5	11,000	9,000	13,30	100,000	20,000	40,000	14,007
M16 x 1,5	12,000	9,000	15,30	100,000	22,000	44,000	16,007
M20 x 1,5	16,000	12,000	19,30	125,000	25,000	44,000	20,007

Kühlkanal-Gewindeformer für Metr. ISO-Feingewinde



P	•
M	•
K	•
N	○
S	•
H	

Schneidstoff	HSS-E-PM
Ø-Toleranz	6HX
Oberfläche	Ⓢ
Typ	N
Form	E
Innenkühlung	



DIN 2174 ~DIN 374

Artikel-Nr.

4484

Rabattgruppe

208

d1	d2	SW	dk	l1	l2	l5	Code-Nr.
	mm	mm	mm	mm	mm	mm	
M8 x 1	6,000	4,900	7,55	90,000	11,000	35,000	8,005
M10 x 1	7,000	5,500	9,55	90,000	11,000	35,000	10,005
M10 x 1,25	7,000	5,500	9,40	100,000	14,000	39,000	10,006
M12 x 1,25	9,000	7,000	11,40	100,000	16,000	40,000	12,006
M12 x 1,5	9,000	7,000	11,30	100,000	16,000	40,000	12,007
M14 x 1,25	11,000	9,000	13,40	100,000	15,000	40,000	14,006
M14 x 1,5	11,000	9,000	13,30	100,000	15,000	40,000	14,007
M16 x 1,5	12,000	9,000	15,30	100,000	15,000	44,000	16,007
M20 x 1,5	16,000	12,000	19,30	125,000	16,000	44,000	20,007



Kühlkanal-Gewindeformer für Metr. ISO-Feingewinde



P	•
M	•
K	•
N	○
S	•
H	

Schneidstoff **HSS-E-PM**

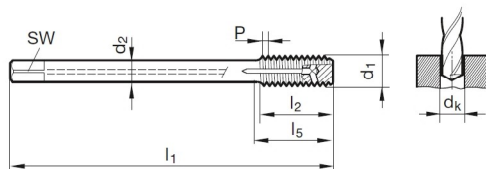
Ø-Toleranz 6HX

Oberfläche **C**

Typ N

Form C

Innenkühlung



DIN 2174 ~ DIN 374

Artikel-Nr.

4486

Rabattgruppe

208

d1	d2	SW	dk	l1	l2	l5	Code-Nr.
	mm	mm	mm	mm	mm	mm	
M8 x 1	6,000	4,900	7,55	90,000	11,000	35,000	8,005
M10 x 1	7,000	5,500	9,55	90,000	11,000	35,000	10,005
M10 x 1,25	7,000	5,500	9,40	100,000	14,000	39,000	10,006
M12 x 1,25	9,000	7,000	11,40	100,000	16,000	40,000	12,006
M12 x 1,5	9,000	7,000	11,30	100,000	16,000	40,000	12,007
M14 x 1,25	11,000	9,000	13,40	100,000	15,000	40,000	14,006
M14 x 1,5	11,000	9,000	13,30	100,000	15,000	40,000	14,007
M16 x 1,5	12,000	9,000	15,30	100,000	15,000	44,000	16,007
M20 x 1,5	16,000	12,000	19,30	125,000	16,000	44,000	20,007